

THREADED BODY

Zinc-plated steel.

PLUNGER

Nitrided and black-oxide steel.

Suggested tolerance for matching hole = G7.

LOCKING NUT

Zinc-plated steel.

KNOB

Glass-fibre reinforced polyamide based (PA) technopolymer, black colour, matte finish.

CENTRE CAP

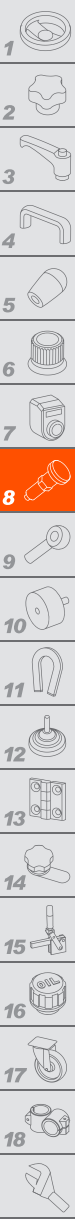
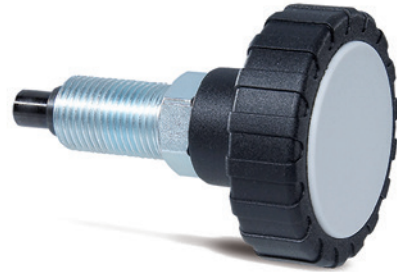
Glass-fibre reinforced polyamide-based (PA) technopolymer, colour light grey.

FEATURES AND APPLICATIONS

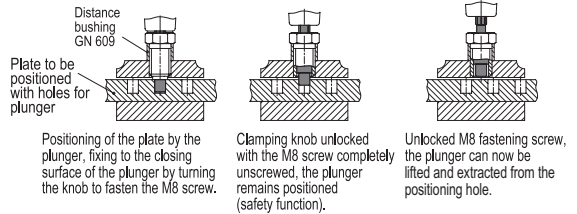
GN 7336.8 indexing plungers, a further development of GN 7336.7, are used where it is necessary to simultaneously position, lock and make secure elements whose position needs to be changed. Thanks to its special configuration, GN 7336.8 plunger cannot be extracted from the positioning hole by simply turning the knob, as for GN 7336.7 plunger, but it can be extracted only after unlocking it from the safety position by unscrewing M8 fastening screw by 5 mm and turning the knob (when the plunger is unlocked from the safety position, the spring releases and the plunger can be lifted).

ACCESSORIES ON REQUEST

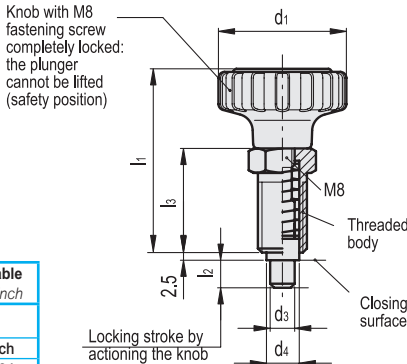
AISI 303 stainless steel distance bushings GN 609.5 (see page 1030), for making up for the length of threading in case the plunger is assembled on thin sheets.



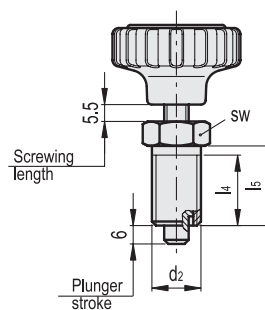
Assembly example



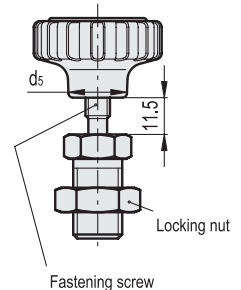
Locking position



Closing position



Retracted plunger



| Conversion Table | |
|-------------------|------|
| 1 mm = 0.039 inch | |
| d3 | |
| mm | inch |
| 6 | 0.24 |
| 8 | 0.31 |

| Code | Description | d3 | | | | | | | | | | Spring preload [N] | Spring max load [N] | ⚖ | |
|----------|------------------------|----|---------|-----------------------------------|----|----|----|----|----|----|----|--------------------|---------------------|----|-----|
| | | d1 | d2 | Plunger -0.02 -0.04 Hole G7 | d4 | d5 | l1 | l2 | l3 | l4 | l5 | | | | sw |
| GN.29261 | GN 7336.8-42-M16x1.5-6 | 42 | M16x1.5 | 6 | 11 | 19 | 60 | 9 | 34 | 23 | 26 | 19 | 14 | 26 | 100 |
| GN.29266 | GN 7336.8-42-M16x1.5-8 | 42 | M16x1.5 | 8 | 11 | 19 | 60 | 9 | 34 | 23 | 26 | 19 | 14 | 26 | 100 |
| GN.29271 | GN 7336.8-53-M16x1.5-6 | 53 | M16x1.5 | 6 | 11 | 24 | 66 | 9 | 34 | 23 | 26 | 19 | 14 | 26 | 120 |
| GN.29273 | GN 7336.8-53-M16x1.5-8 | 53 | M16x1.5 | 8 | 11 | 24 | 66 | 9 | 34 | 23 | 26 | 19 | 14 | 26 | 120 |